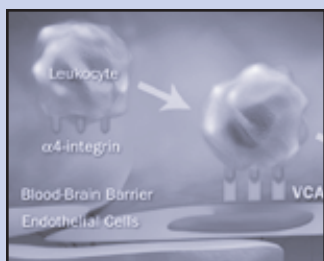


INSIDE

4th Annual Boston Cure Party for Multiple Sclerosis a Huge Success

Letter from the President2

Second Annual Sing to Cure MS3



New Drug on the Block: The Treatment Formerly Known as Antegren4-5



Second Annual Cuts to Cure MS6

Accelerated Cure Project Named John Hancock's 2005 Nonprofit Partner . . .6

A New Reason to Run in the New Year7

On Saturday, November 20, 2004 the MIT Faculty Club was filled with more than 250 guests, volunteers and staff as Boston Cure Project's fourth annual party kicked off. By the end of the night, Boston Cure Project had raised more than \$36,000 in sponsorships, contributions, and silent auction purchases.



The evening began with an informative lecture by Dr. Kristin Ardlie of Genomics Collaborative, Inc. on Advanced Genetics Techniques and DNA Repositories. Following the lecture, guests bid on the many unique items at the silent auction, listened to the lively music of Arlington Feed & Grain, and had the opportunity to speak with Boston Cure Project's staff and board members, as well as the evening's guest of honor, Bradley

Whitford, who plays Josh Lyman on the popular television series, The West Wing.

More than fifty volunteers assisted in the evening's overwhelming success. Volunteer Administrative Assistant Sue Mellor kept the donation and registration tables organized and running smoothly, in addition to the many hours she spent helping prepare for the event.

The silent auction, run by volunteer auction director Debbie Mellor, raised over \$10,000. With items such as week-long vacation home rentals, jewelry, hotel stays, baseballs autographed by Curt Schilling and Nolan Ryan, hand-made infant clothing, and a tour of the set of The West Wing, there was something to appeal to everyone. While some guests waited by the silent auction table to guard their favorite items, others enjoyed the excellent food provided by MIT Faculty Club & Catering.

Later, the evening's talks began with a short speech by Deborah Hernandez of Biogen Idec, Inc., the Boston Cure Party's headline sponsor. Next, the evening's guest of honor, Bradley Whitford, gave an entertaining speech. He touched on his

(continued on page 2)

Letter from the President



As usual, since our last newsletter much has happened. In the world of MS the big news is the FDA approval of Tysabri (formerly Antegren) for the treatment of relapsing forms of MS. We explain a bit about the mechanism of action of this drug in this issue.

You might have noticed a slight change to the look of the newsletter with the **Accelerated Cure Project for Multiple Sclerosis** logo where the Boston Cure Project logo usually is. This is part of our partnership with John Hancock's Long Term Care Group, which you can read more about inside.

We also have reports on the events that happened at the end of last year including the Cuts to Cure MS salon-a-thon, Sing to Cure MS concert, and our Fourth Annual Boston Cure Party featuring Bradley Whitford from The West Wing. Additionally, we feature Carol Rose and Jeremy Zirin, who ran for us in the Sense of Purpose program.

If you'd like to get monthly updates via email on what we are doing, you can receive them by clicking on the "Sign Up" button at the top of every page of our web site at www.acceleratedcure.org.

Regards,

Art Mellor President & CEO
Accelerated Cure Project

Boston Cure Project staff with guest of honor Bradley Whitford



4th Annual Boston Cure Party for Multiple Sclerosis a Huge Success

(continued from page 1)

experiences with MS, which range from his real-life interactions with his sister-in-law who has the disease, to his professional work on The West Wing, where the character of President Bartlet has MS. Dr. Rip Kinkel educated the audience with information on the status of MS research and Boston Cure Project's progress with its pilot Blood, Tissue, and Data Bank. Following an impassioned introduction by board member George Peabody, Art Mellor came to the podium to give Boston Cure Project's year in review. In addition to discussing our 2004 achievements, Art had the pleasurable task of introducing Michele Van Leer, of John Hancock. With the John Hancock building in view through the room's windows, Michele announced that Boston Cure Project is the John Hancock Long Term Care Group's pet charity of 2005. John Hancock will provide monetary and staff assistance as Boston Cure Project launches a new, national name, **Accelerated Cure Project for Multiple Sclerosis**.

Speaker Kristin Ardlie with Art and Hollie

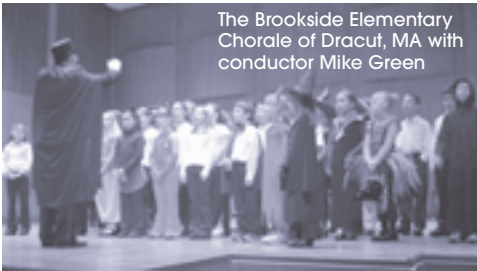


Following these updates, the evening wound down as people made final silent auction bids and took the opportunity to meet, and often have their picture taken with, Bradley Whitford.

Thank you to our many volunteers and auction donors. We also thank our generous sponsors, Biogen Idec, Inc., Clockwork Design Group, Inc., Teva Neuroscience, Millennium Pharmaceuticals, Inc., and Feeley & Driscoll, as well as the Fairmont Copley Plaza Hotel, which kindly donated a room for Mr. Whitford.

Melodiously Marvelous: The Second Annual Sing to Cure MS

The second annual Sing to Cure MS Halloween concert took place on Sunday evening, October 24 at the Pickman Concert Hall of the Longy School of Music in Cambridge, Massachusetts. A two-hour performance of classical singing, the event is directed and produced by volunteer, Marion Leeds Carroll, who herself is a professional opera singer and person with MS.



Once again, local classical singers, established professionals, students, and recent graduates of the New England Conservatory joined together to donate their time and talent to raising money for the Boston Cure Project. The performance roster included over twenty solo and ensemble singers, three pianists, a 20+ voice children's choir, a conductor, and a staff of many other talented and dedicated volunteers.

Despite competition with the Red Sox's miraculous appearance in Game 2 of the World Series, the event drew a crowd of roughly fifty people. With Marion's selected theme of "MS and other Scary Things," the two-hour performance went on to raise more than \$3,500 toward our efforts in determining the causes of MS.

Special thanks go out to sponsors American Express Financial Advisors, Teva Neuroscience, and Clockwork Design Group whose commitment and generosity made the event possible. We also would like to thank volunteer event directors Amanda Song, who organized the day of the event logistics, Ruth Seidman, who graciously handled all ticket sales, and Rebecca Enright, who led our publicity efforts.

Plans are already underway for a 2005 concert in Lexington, Massachusetts. If your company would like to be a sponsor of the 2005 concert or to place an ad in the 2005 concert program, visit the following link for details: <http://leedscarroll.com/boston-cure/program-ads.html> or contact Melissa O'Shea directly (781-487-0011).

Boston Cure Project T-Shirt Pictures



Kemp Jaycox at the Cincinnati Zoo



Mr. and Mrs. Taksen on their honeymoon in Aruba

VOLUNTEERS

Our volunteers are a precious resource! These generous folks have been giving their time to Accelerated Cure Project in recent months:

VOLUNTEER STAFF

Susan Mellor –
Administrative Assistant

CUTS TO CURE MS

Dr. & Mrs. Arthur Kaplan
Janelle Hamilton
Sarah Conklin

SING TO CURE MS

Marion Leeds Carroll
Lisa Desautels
Amanda Song
Rebecca Enright
Ruth Seidman
Amanda Viciano
Anastasia Robinson
Anthony O'Shea
Beth Canterbury
Dan Pettit
Dana Schnitzer
Daniel Kamalic
Dave Goldhirsch
Debbie Mellor
Denise Ambruson
Devin Dukes
Eric Schwartz
Eric Sosman
Evan Denmark
Ezra Peisach
Gary Thies
Isabel Leonard
James Carroll
Janine Wanee
Jim Carroll
Ken Viciano
Krista Wilhelmssen
Laura Green
Laurie Lemley
Maryann Mootos
Meredith Hansen Skinner
Michelle Wright
Peter Schmidt
Pirjo Heels
Rachel Golub
Randi Kestin
Rebecca Burstein
Rich Hagopian
Skyler Wrench
Stephanie Mann
Steven Morris
Sue Halliday
Susan Cooke
The Brookside Chorale
Mike Green
Thomas Dawkins
Thomas Weber
Todd Hall

BOOK REVIEWS

Lisa Desautels
Marsha Zabarsky

BOSTON CURE PARTY FOR MS

Bradley Whitford
Kristin Ardlie
Rip Kinkel
Sue Mellor
Debbie Mellor
Jill McGaffigan
Leslie Wolf
Rachel Golub

New Drug on the Block: The Treatment Formerly Known as Antegren

Since many people have not heard the specifics of the Tysabri approval, we thought we would share the facts known about the drug so far. Accelerated Cure Project does not endorse or recommend any particular treatment, but we do support education!

On November 23, 2004, the FDA gave accelerated approval of a new drug for the treatment of relapsing forms of MS. The drug is called Tysabri (pronounced tie-SAB-ree, generic name natalizumab) and is based on one-year data from the AFFIRM and SENTINEL trials. Tysabri was formerly known as Antegren, but the FDA ruled that the name was too similar to several other infused medications, which could be problematic. A new name was created based on the French root "abri," which means shelter.

The AFFIRM trial involved 942 subjects taking Tysabri or placebo alone and showed a 66% reduction in the rate of relapses, with 76% of the subjects on Tysabri relapse free after one year vs. 53% on placebo. The SENTINEL study involved 1,171 subjects taking Tysabri or placebo along with Avonex and showed a 54% reduction in relapses with the combination when compared to taking Avonex alone.

These studies will continue for another year in order to collect data on progression of disability in addition to continued effect on relapses. The early data is only sufficient to judge

effects on relapses and MRI results and is not sufficient to determine if Tysabri affects the progression of disability. More data is coming that will indicate whether or not Tysabri affects the progression of disability.

Tysabri is administered via a one-hour intravenous infusion of 300mg every four weeks. Initial visits require an additional one-hour follow-up period to monitor for possible adverse reactions. Common side effects seen so far include headache, fatigue, urinary tract infection, depression, lower respiratory tract infection, joint pain, and abdominal discomfort. Serious hypersensitivity occurred in less than 1% of subjects. Within 12 weeks, antibodies developed in about 6% of subjects and resulted in a substantial decrease in efficacy.

Pricing for Tysabri is \$1,808 per dose (\$23,504 per year). Insurance companies are still deciding on coverage, but due to its administration in a doctor's office or hospital, Tysabri may already be covered in the same way that steroid infusions are. Check with your insurance provider to find out your personal situation.

Mechanism of Action

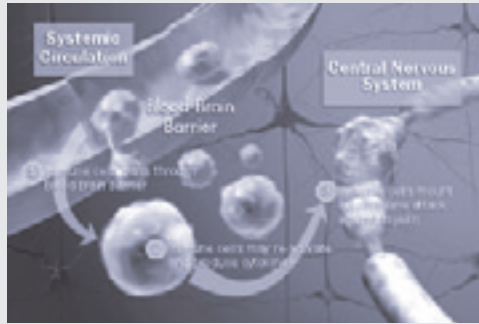
Tysabri is the first MS drug to be successfully developed based on a theory of how the disease works, to be demonstrated to do what it was designed to do, and then to be proven effective in clinical trials.

Tysabri is a monoclonal antibody (that's what the 'mab' means at the end of natalizumab), which means it is a biologic compound designed to attach itself to a specific protein in the body. In the case of Tysabri, the target protein is involved in the inflammatory process observed in MS. It is known that inflammation plays a significant role in the development of MS. It is not known if the inflammation causes damage to the myelin or is a response to the damage that may be caused by other means. The success of other immunomodulating drugs indicates that inflammation plays an important role, however.

Immune cells, which constitute the inflammation we see in MS, migrate through the blood brain barrier by attaching themselves to blood vessel walls and squeezing through. To do this, proteins called integrins (in particular alpha4-integrins) that are on the surface of immune cells adhere to proteins on the blood vessel walls (in this case they are called VCAM-1), which allows them to slow down enough to begin the process of moving into the brain.

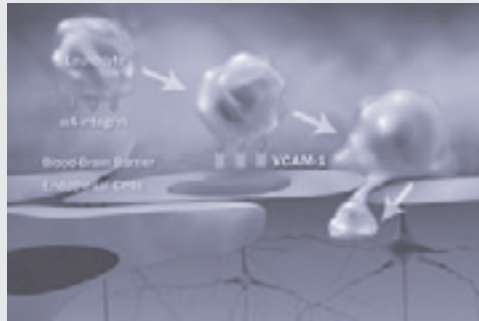
Tysabri attaches to the integrins on the immune cells and physically blocks their ability to attach to VCAM-1, making it harder for the cells to get into the brain as easily. Even if some do get into the brain, it is possible that the blocked integrins make the immune cells less effective and therefore less harmful.

Adhesion Molecule Inhibitors



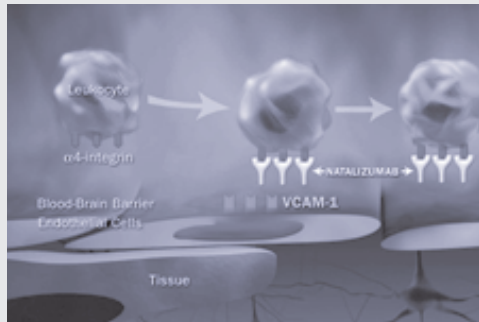
In MS, leukocytes migrate through the blood-brain barrier

- In multiple sclerosis (MS), activated immune cells migrate into the brain through the blood-brain barrier by interactions of adhesion molecules such as integrins and VCAM-1.
- Once in the brain, integrins on immune cells may bind to extracellular and cell surface proteins resulting in inflammatory activity that leads to myelin and axonal damage as well as nerve cell death.¹



A close-up view of the blood-brain barrier reveals the role of adhesion molecules in leukocyte migration

- Adhesion molecules such as integrins and VCAM-1 facilitate the migration of immune cells into the brain through the blood-brain barrier.¹



In the presence of adhesion molecule inhibitors, leukocyte migration is prevented

- Research suggests natalizumab, by binding to α 4-integrins, inhibits interaction with VCAM-1, thus disrupting migration across the blood-brain barrier.¹
- Adhesion molecule inhibitors are an innovative therapeutic approach that, through adhesion molecule blockage, inhibit inflammatory activity in MS. The specific mechanism of action by which natalizumab exerts its effects in MS have not been fully defined.²

History

Development of drugs is a long, slow process. To get an idea of the work that goes into producing a drug like Tysabri, take a look at the timeline of events in its development:

- **1987** Martin Hemler of DFCI identifies VLA-4
- **1989** Roy Lobb at Biogen identifies VCAM-1
- **1990** Elan describes role of alpha-4 beta-1 integrin in EAE
- **1992** EAE prevented by antibodies to alpha-4 beta-1 integrin
- **1994** Humanized version of natalizumab created by Elan
- **1995** Elan files Investigational New Drug application with FDA

- **1999** Elan initiates Phase II study of natalizumab
- **2000** Elan and Biogen Idec partner
- **2001** Phase II trial results available, Phase III trial initiated
- **2004** Tysabri approved by FDA

Additional Information

- Full product information: www.tysabri.com
- FDA approval letter, labeling information, and fact sheet: www.fda.gov/cder/drug/infopage/natalizumab
- Movie demonstrating mechanism of action: homepage.mac.com/vincentmacaluso/Dr.Macaluso'sSite/FileSharing7.html

Note that the above URL is case sensitive, so type carefully.

References: ¹. Natalizumab Prescribing Information, 2004.

². von Andrian UH, Engelhardt B. α 4 integrins as therapeutic targets in autoimmune disease. N Engl J Med. 2003;348:68-72.

Lisa Desautels
Jane Shapiro
Nancy Costello
Patrice Connelly
Rosemary Panza
Julie Gershon
Kelly McGowan
Shawn McGowan
Hollie Schmidt
Bill Meyer
Debra Robison
Fiona Reardon
Kim MacDonald
Kelly Chanliu
Jen Tobin
Lisa Sargeant
Michele McHugh
Karen Kivisto
Pete Mellor
Asha Mellor
Kim Pagan
Marie Rudzinsky
David Rudzinsky
Rose Gershon
Karen Donoghue
Melissa O'Shea
Anthony O'Shea
Gail Martino
Marsha Zabarsky
Alexandra Wright
Barbara Morgenlender
Ellie Nelson
Bob Bargar
Peter Schmidt
Marion Leeds Carroll
Jeff Shapiro
Eddy Fava
Rebecca Small
Caroline Michaud
Theresa Beach
Jeanne Hambelton
Joanne Geary
Michelle Feeley
Danielle Coutu
Stephanie Bruce
Donna Greenan
Lesley McAdams
Lisa Tasker
Dave Cosentino
Kate Cosentino
Robyn Sandrew
Dave Henderson

DONOR DATABASE

Dave Kaffine
Joan Coyne

EQUIPMENT PROCUREMENT

Frank Sisto
Juanita Contreras
Natasha Case

FUNDRAISING

Jane Shapiro
Laura Green
Ray Desautels
Tanya Africa

HBS MS COLLABORATION PROJECT

Cara Critzer
Elise Vincens
Robert Hester

NEWSLETTER

Joyce Ananian
Lisa Desautels

Second Annual Cuts to Cure MS a Hit

On Sunday, November 7th, four Norfolk, VA-area salons opened for business for the second annual Cuts to Cure MS salon-a-thon. Organized and run by Janelle Hamilton of About Face Hair Design, the event featured \$25 haircuts, manicures, massages, and facials, the proceeds of which were donated in full to the Anna Peabody Fund of the Boston Cure Project.

The Anna Peabody Fund honors 19-year-old Acton, Massachusetts, teenager Anna Peabody, who was diagnosed with MS when she was 15. Friends and family members, including her grandparents, Dr. and Mrs. Arthur Kaplan of Norfolk, Virginia, created the Anna Peabody Fund to raise money in her name for the Boston Cure Project. In 2003

Janelle Hamilton, a friend of the Peabody-Kaplan family, decided to support their efforts by hosting an annual salon-a-thon.



In its second year running, not only did About Face Hair Design organize and participate in the event, but they recruited several other salons to participate as well. Those salons

were Patrice LaFont Skin Care International, Inner Harmony Center for the Healing Arts, and Aura Salon & Spa. Twenty generous stylists at these salons donated their time and

energy to work for free that day so that payment could be donated in full to our worthy cause. In addition, local restaurants and businesses supported the event with free food and a selection of fine gifts for a raffle.

In total, the event drew approximately 75 participants and raised over \$6,000. If you live in the Hampton Roads area, we hope to see you there next time. If you know of a salon anywhere in the U.S. that might like to participate in the event with us next year, please contact Melissa O'Shea at 781-487-0011.

Accelerated Cure Project Named John Hancock's 2005 Nonprofit Partner

At the recent fourth annual Boston Cure Party, John Hancock's Long Term Care division announced it had selected Boston Cure Project as its exclusive 2005 nonprofit partner. This honor, from the significant insurance company, comes with a grant of \$50,000, five Boston Marathon numbers, public relations assistance, and the business expertise of a John

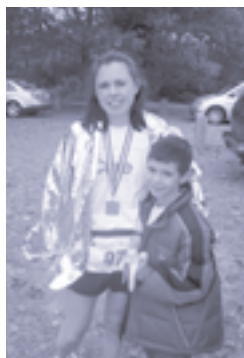
Hancock staff board member. Extensive volunteer support will also be provided regionally by John Hancock employees.

Boston Cure Project was selected amongst many organizations for its passion, entrepreneurial spirit, and potential for success. It is leveraging

the partnership to roll out a new national umbrella name and extend its presence to other cities in the US. As of January 2005, the organization's new national name is **Accelerated Cure Project for Multiple Sclerosis**. Boston Cure Project will remain as the local Boston affiliate and the national headquarters.

A New Reason to Run in the New Year

If you're looking for the inspiration to pick yourself up off the couch this post-holiday season and get some New Year's resolutions underway, look no further. Whether your resolution involves a renewed fitness regime, the taking up of a new hobby, or the pursuit of more meaningful ways to spend your time, these stories about our sensational 2004 Sense of Purpose participants should do the trick.



Carol Rose is a Ledyard, CT resident, who supported us last October by running the Mystic Places Marathon in her home state. Via sponsorships collected

throughout the year from family, colleagues, community friends, including Gabriele's Karate and Kickboxing Studio of Groton, which held a bingo night fundraiser in her honor, Carol raised over \$7,000 for our work in determining the causes of MS. She finished the marathon in 4 hours and 12 minutes with her husband, mother, two sons, and training

partners cheering her on. Carol will run again this April as a member of Accelerated Cure Project's Boston Marathon team.

Jeremy Zirin is a soon-to-be new dad from Brooklyn, NY who ran the 2004 Philadelphia Marathon for Boston Cure Project on November 21.



Through the sponsorship of many, Jeremy raised over \$2,700 in support of our work. In addition, he and his brother ran together and with a shared goal of qualifying for the 2006 Boston Marathon. This feat involved finishing the race in less than 3 hours and 16 minutes. Jeremy finished with a time of 3:11:50 and waited anxiously for Josh. At 3 hours, 15 minutes, he had just about lost hope. However, at the sound of his family cheering, Jeremy turned to see Josh approach and finish with a time of 3:15:25!

Congratulations to all of our friends whose personal aspirations, generosity, and support made a big impact on our work this past year.

Boston Cure Project T-Shirt Pictures



Pam Clasby at the Grand Canal in Venice, Italy.
Photo by Brendan Clasby



Art Mellor in front of St. Stephen's Cathedral in Vienna.
Photo by Hollie Schmidt



Ben Keil, Julie Morgenlender, and Sarah VanWagenen-Foxe at UCLA.
Photo by Marcus Smith

Barbara Morgenlender

SENSE OF PURPOSE

Carol Rose
Jeremy Zirin

OTHER

Susan Dunn – Junior League Project
Rob Lester – LDN Interview
Brian Del Vecchio – MSNews Upgrade
Jennifer Tobin – Neuroanatomy Paper
Stephanie Sisto – MS Research Spending Analysis
Lesley Watts – Tissue Bank Workshop
Peter Schmidt – Volunteer Intro Document
Susan Jones – Genetic Spreadsheet

CONTRIBUTED GOODS AND SERVICES

Clockwork Design Group, Inc.
Sue Mellor
Lifting Mind, Inc.
Mail Perfect
Jill McGaffigan
128 Volvo/Saab of Wakefield
Andrew Nelson
Arlington Feed & Grain
Art & Debbie Mellor
Asha mellor
CBS4 & UPN38
Boston Red Sox
Boyajian, Inc.
CommonGoals
Crunch Fitness
David Blohm
Deb Krieger
Debi Milligan
Dellaria of Peabody
Denis Hunt
Denise Desautels
Dewar's 12
Elinor Nelson & Bob Bargar
Expo Design Center
Four Seasons Hotel Boston
Fred Finkel
Gibson Guitars
Holly Go Lightly
iRobot
Jaras Designs
John Hancock
Jonathan & Leslie Wolf
Kameleon Healing Aromatherapy
Kate Polcari
Library Hotel
Lisa Sargeant
Maggie Harling
Manny Lipson
Mohegan Sun
Newton Marriott
Ocean Edge Resort & Golf Club
Peter & Hollie Schmidt
PRP Wines of Massachusetts
Ray Desautels, Sr.
Rosalind Joffe
Stephanie Anderson
Steve Willis
Tom Mrva
Warner Brothers Studio
WHDH-TV, Channel 7
WXKS FM
Fairmont Copley Plaza
Mercury Interactive

If for any reason you've been left off this list in error, please let us know so we can include you in our next issue!



Nonprofit Org
US Postage
PAID
Permit #4
Rutland, VT 05701
Prsrt Std

300 Fifth Ave.
Waltham, MA 02451

Tel: 781-487-0008
Fax: 781-487-0009

www.acceleratedcure.org
newsletter@acceleratedcure.org

Have you moved?
Changed your email
address? Let us know!
Send changes in
contact information to
newsletter@acceleratedcure.org
or give us a call at
781-487-0008!

Change Service Requested

ABOUT MULTIPLE SCLEROSIS

Multiple Sclerosis is a chronic demyelinating disorder of the central nervous system that often results in severe disability including the inability to walk, blindness, cognitive dysfunction, extreme fatigue and other serious effects. MS affects over 400,000 people in the US and 2 million individuals worldwide. The disorder occurs twice as often in women as in men. The cause is not known and there is no known cure.

CONTRIBUTE TO ACCELERATED CURE PROJECT:

By Check: make checks payable to Accelerated Cure Project and mail to:

Accelerated Cure Project
300 Fifth Avenue
Waltham, MA 02451

By Credit Card: On www.acceleratedcure.org, click on the "Contribute" box at the top of the page and follow instructions under the heading "Contributions by Credit Card."

Volunteer Today: See www.acceleratedcure.org for volunteer opportunities. On the left click "About," then click "Volunteer," then click on any of the volunteer opportunities for more details. You may also call 781-487-0008 or email info@acceleratedcure.org.

Want an Accelerated Cure Project T-Shirt? For any donation of \$25 or more, we will send you a t-shirt upon request. If you offer to send us a picture of yourself in one of our t-shirts, we'll send you one for free! Please remember to indicate t-shirt size when making your request. Call 781-487-0008 or email info@acceleratedcure.org

Subscribe Now to Our Newsletter: Call 781-487-0008, email newsletter@acceleratedcure.org or go to www.acceleratedcure.org and click on "Sign Up." You may also unsubscribe using this contact information.

Subscribe Now to Our Electronic Mailing Lists:

Go to www.acceleratedcure.org. Click the "Sign Up" box at the top of the page.

MS NEWS WEB SITE: PRODUCED BY ACCELERATED CURE PROJECT

MS News is the first interactive online source of MS-related news and research updates. MSNews provides a place for the MS community – individuals with Multiple Sclerosis, family members, clinicians, scientists and others – to read and submit the latest news and research updates, participate in discussions on MS topics, and stay up-to-date on the issues that affect them most. Access to the site is available free of charge by visiting msnews.bostoncure.org.

Have you moved? Changed your email address? Let us know! Send changes in contact information to newsletter@acceleratedcure.org or call 781-487-0008!

ACCELERATED CURE PROJECT UPDATE

VOL. 3 – WINTER 2005

Newsletter Design & Layout contributed by:
Clockwork Design Group, Inc (www.cdgi.com)

Mailing House Services contributed by:
Rich Macaluso of Mail Perfect, Inc. (www.mailperfect.com)

Editor-in-Chief: Julie Morgenlender

Writers: Art Mellor, Julie Morgenlender, Melissa O'Shea

Photographers: Karen Donoghue, Dave Henderson, Art Mellor, Pete Mellor.

Inset: Courtesy of Biogen Idec, Inc.

Editors: Joyce Ananian, Lisa Desautels, Barbara Morgenlender, Julie Morgenlender, Hollie Schmidt

This newsletter is available online at www.acceleratedcure.org, in the "Downloads" section.